

free **3** skill level

Project created & designed by  
Jo-Ann Fabric and Craft Stores®

Crafts.  
Discover life's  
little pleasures.



chrysanthemum pillow

just ask, Jo-Ann **how to**

more projects, tips & techniques at Joann.com®

### SUPPLIES & TOOLS:

- 1¼ yd home decor Fabric A: embroidered circle sheer
- ¾ yd home decor Fabric B: heavy weight, solid color
- 1 bag polyester stuffing
- Sewing machine
- Press cloth
- Basic sewing supplies
- Iron, pressing surface

### DIRECTIONS:

Seam allowances 1/2", unless noted. RS = Right side(s) WS= Wrong side(s)

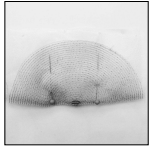
### CUTTING:

Fabric A cut: two 15" circles, 4"x47" piece. Cut around 61 individual circles.

Fabric B cut: two 15" circles, 4"x47" piece

### SEWING & ASSEMBLY:

1. Pin and baste WS of Fabric A on top of RS of Fabric B for two 15" circle pieces and a long strip.
2. With RS together, pin and stitch short edge of strip.
3. With RS together & edges even, pin one long side of the strip to the edge of one circle. Stitch.
4. With RS together & edges even, pin other long side of strip to 2nd circle. Leave a 5" opening for stuffing. Set aside.
5. For Gathered Petals, fold embroidered circle in half, RS together. Stitch around the outer edge of the circle. Trim 1/4" around circle. Cut a small opening at the center of the bottom fold. Turn circle RS out through hole. Press. Baste one row of stitching 1/8" from folded edge. Pull bobbin thread for gathering. Make 35 gathered petals.
6. For non-gathered petals, Follow Step 5, without basting and gathering. Make 22 non-gathered petals.
7. For Flower Center, cut out 4 circles. With RS together, pin and stitch along circle edge. Cut a small opening at center on one circle. Turn circle right side out. Press. Make 2 of these full-circle petals.
8. Baste around center of circle. Pull bobbin thread to gather up circle at center. Tack in place.
9. Repeat for second center petal. Layer full-circle petals on top of one another and stitch together at centers.
10. Once petals are made, lay them out on the pillow top. Pin in place. Hand stitch to surface.
11. Stuff pillow. Close opening with whip stitch.



Skill Level 3: Experience necessary

Approximate Crafting Time: 3½ hours

Please read and follow all manufacturers' instructions for all tools and materials used. Provide adult supervision if children participate in this project. ©2010 Jo-Ann Stores, Inc. All rights reserved.

**JOANN**  
fabric and craft stores®

P311-496 • 291-310

Up 8/29/10