

## 5002 CUP COZY & CAN COZY



### TABLE OF CONTENTS

Material Requirements.....pg. 1  
 Cup Cozy & Appliqué Pattern Pieces.....pg. 2  
 Can Cozy & Pocket Pattern Pieces.....pg. 3  
 Sewing Instructions..... pg. 4

### 5002 Cup Cozy & Can Cozy

Cup cozy and can cozy are double, have fleece interlining and Velcro® closure.

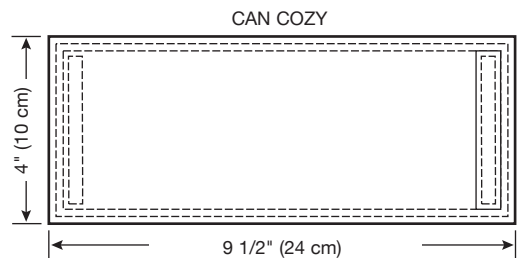
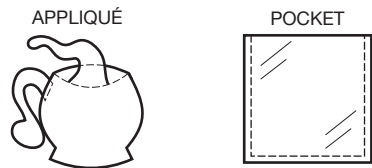
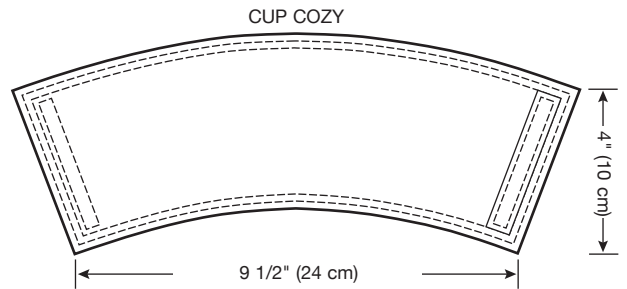
Pattern pieces for cup appliqué and pocket are included.

**SUGGESTED FABRICS:** Cotton, cotton types, calico, decorator fabrics, denim, nylon

#### MATERIAL REQUIRED:

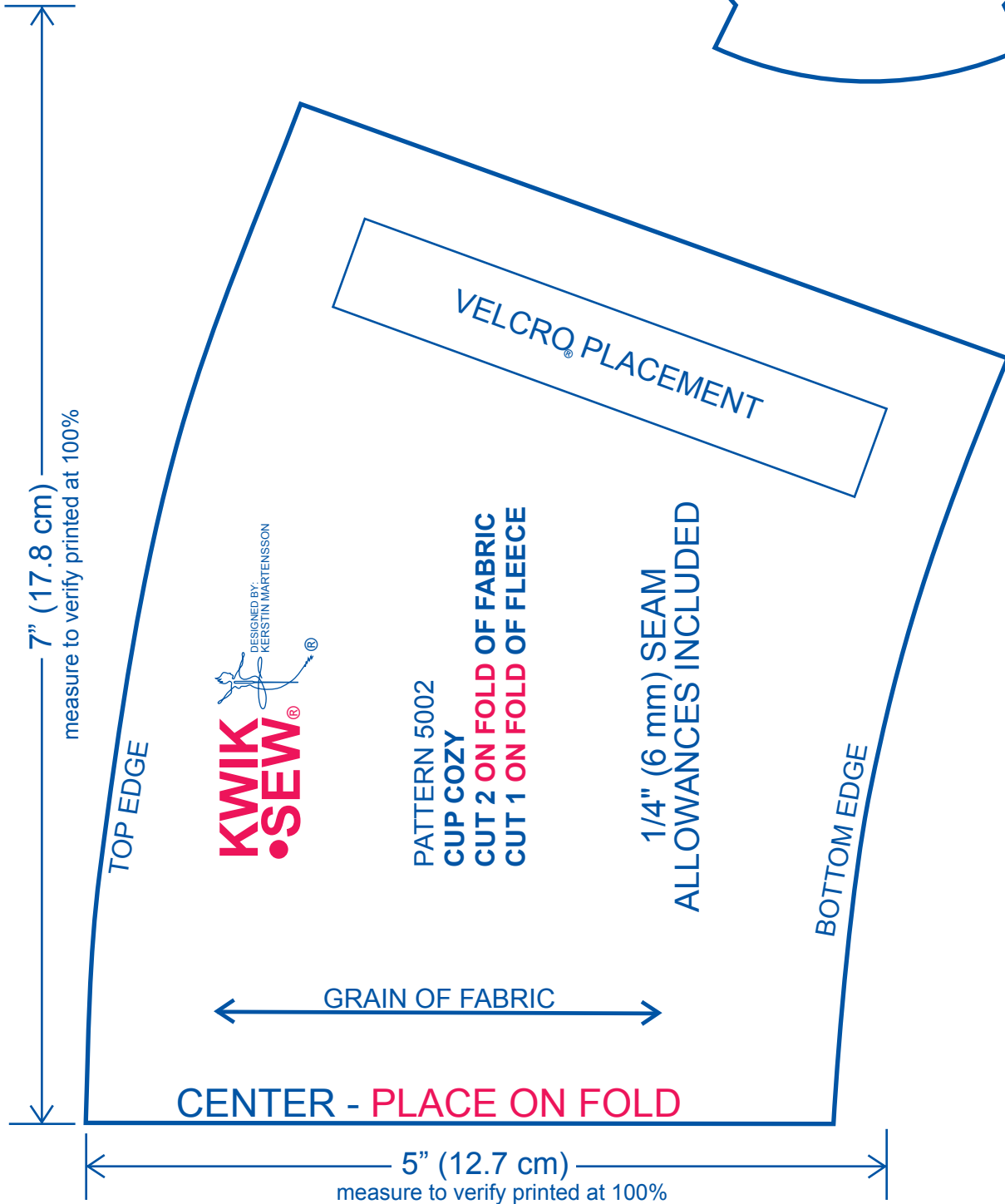
1/4 yd (0.25 m) of Fabric, Lining, and Polyester or heat resistant fleece 28" (71 cm) Wide (minimum width). Scrap pieces of fabric, paper backed fusible web, and "tear away material" for appliqué. Piece of plastic mylar 4" x 4" (10 cm x 10 cm) for optional pocket

**NOTIONS:** Thread, 3 1/2" (9 cm) of 5/8" (1.5 cm) wide Velcro®. Optional: trims, piping, beads, sequins etc. for embellishment



# KWIK•SEW®

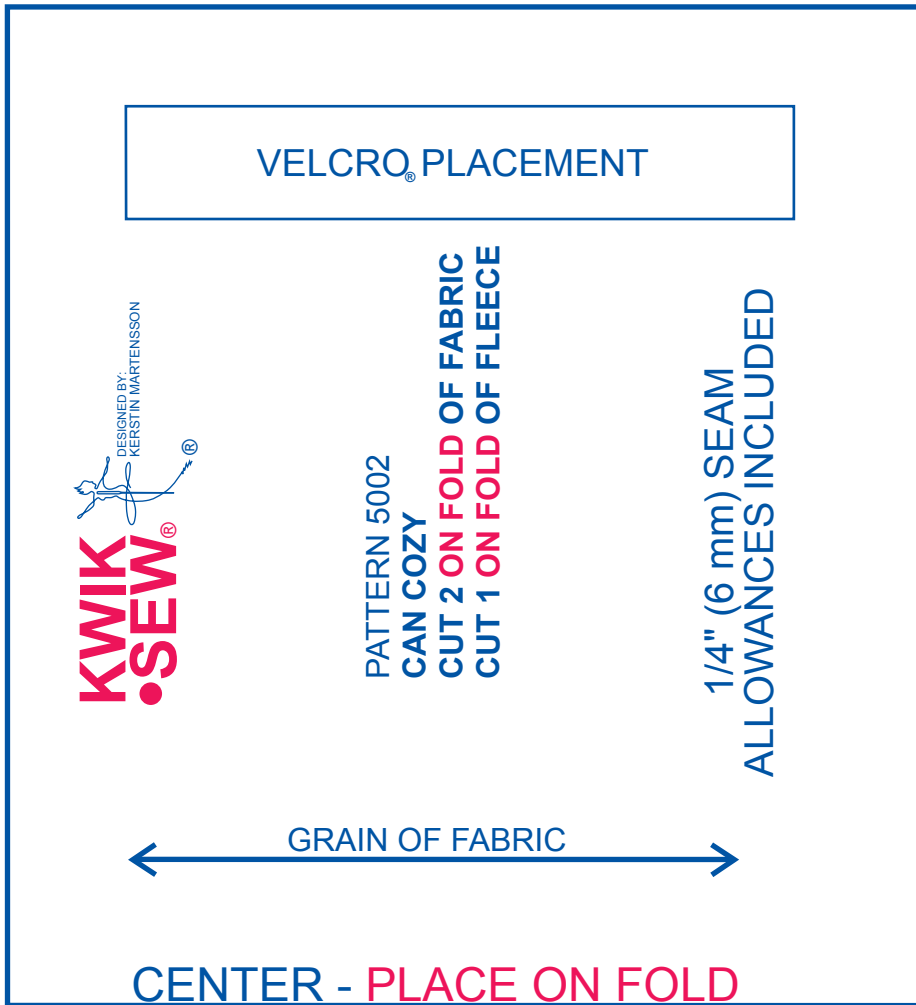
## PATTERN 5002



# KWIK•SEW®

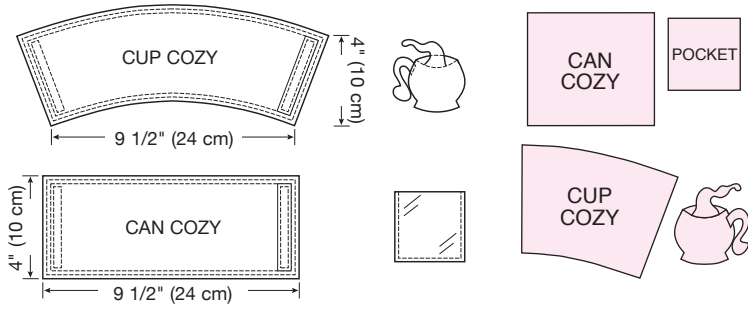
## PATTERN 5002

10" (25.4 cm)  
measure to verify printed at 100%



5" (12.7 cm)  
measure to verify printed at 100%

## INSTRUCTIONS



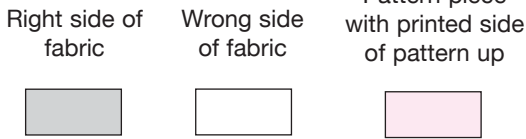
## HOW TO USE A KWIK•SEW PATTERN

Select and cut out the pattern piece for the item you have chosen. Make sure the pattern pieces are printed at 100% scale by measuring the guide by the side of each pattern sheet.

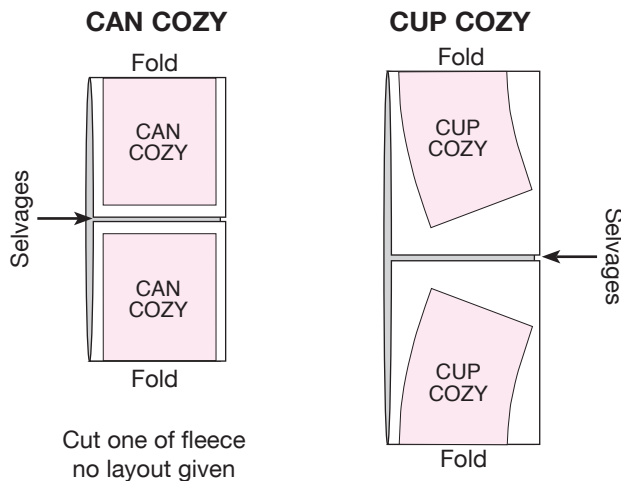
## CUTTING

**Preshrink** and **press** fabric if necessary.  
**Fold** fabric double, **right sides together**, unless otherwise indicated on the layout and **place** pattern pieces on the **wrong** side of fabric.  
**Place** pattern pieces on the fabric with the arrow on top of the grain line in the same direction. **Follow** arrows for **correct grain**, placing ends of grain line an even distance from the selvage.  
**Hold** pattern pieces in place with weights or pins.  
**Cut** out pattern pieces, using scissors or rotary cutter.  
**Transfer** all construction lines to fabric. The easiest way to **mark** is to make tiny clips on the seam allowances. Or, **mark** with chalk or water soluble pen.  
**Label** pattern pieces on **wrong side** with tape.

## LAYOUT CODE



## FABRIC 28" (71 cm) WIDE

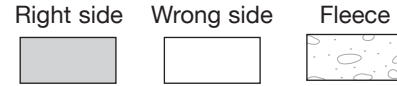


## SEWING PROCEDURES

Use an all purpose thread, a size 12/80 sewing machine needle for light to medium weight fabric or a size 14/90 sewing machine needle for medium to heavyweight fabric.  
 Sew seams with a medium length straight stitch.

**SEAM ALLOWANCES - 1/4" (6 mm) seam allowances** are included for all seams, unless otherwise specified in the following instructions.

## FABRIC ILLUSTRATION CODE



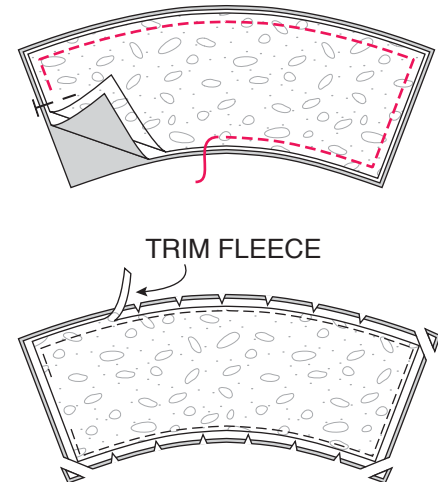
## CUP OR CAN COZY

**Note:** Appliqué and pocket are optional. **Appliqué should be applied to one piece of cozy before sewing cozy** (see optional appliqué on page 5).

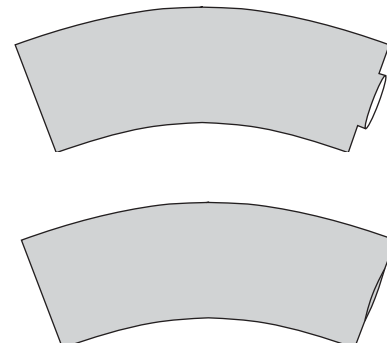
**1/4" (6 mm) seam allowance included.**

The following illustrations will show cup cozy.

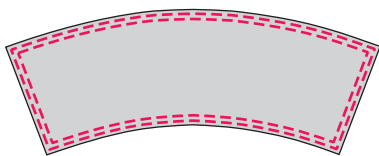
1. Pin cozy pieces, right sides and raw edges together. Place one piece of fleece to wrong side of outside cozy and pin. Stitch outer edges and ends; leave an opening in one end for turning. Trim corners and clip curved seam allowances. Trim fleece in seam allowances close to stitches.



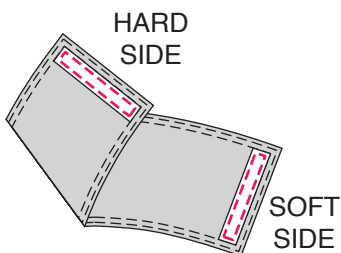
Turn right side out and press. Fold under seam allowances at opening and press.



Topstitch close to outer edges and again 1/4" (6 mm) from first stitching.



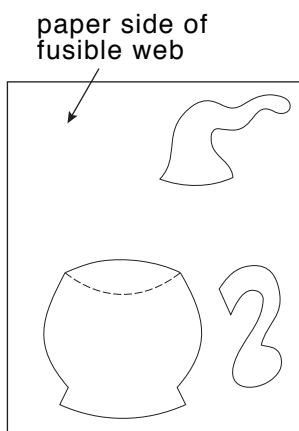
2. Cut a piece of 5/8" (1.5 cm) wide Velcro® 3 1/2" (9 cm) long. Pin hard side to wrong side (inside) and soft side to right side (outside) of cozy at Velcro® placement as marked on pattern. Stitch Velcro® close to edges.



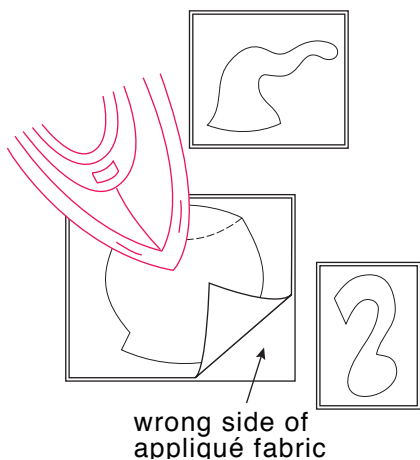
### COFFEE CUP APPLIQUÉ

**Note:** Finished appliqué will be the mirror image of the printed design.

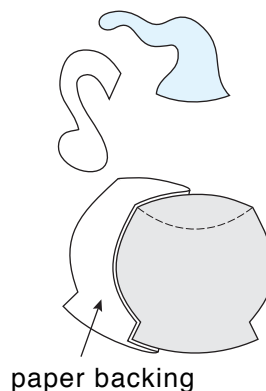
Select fabrics for cup, handle, and steam. Trace all pieces separately to paper side of paper backed fusible web.



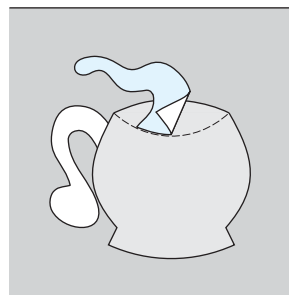
Place rough side of paper (web side) to wrong side of appliqué fabrics and fuse.



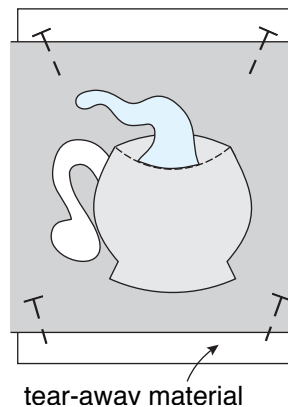
Cut out appliqué pieces and remove paper backing.



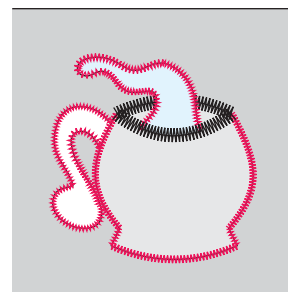
Place appliqué pieces to right side of cozy at desired placement in the following order: handle, cup, and steam. Fuse in place.



Place a piece of tear-away material to wrong side under appliqué pieces and pin or baste in place.

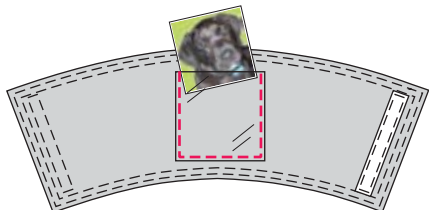


Satin stitch over raw edges, using a **medium zigzag** width and a very short stitch length; change color of thread as necessary. At top edge of cup, satin stitch, using a **wide zigzag** width and very short stitch length; use a contrasting thread to create a brim (see illustration). Remove tear away material.



## POCKET

Cut pocket of clear plastic. When cozy is done, place pocket to cozy and stitch close to side and bottom edges, using a straight stitch and slightly longer than normal stitch length, and slip photo into pocket to personalize cozy.



## EMBELLISHMENT SUGGESTIONS

If desired, cup or can cozy may be embellished using one or many different methods:

Add contrast piping, or beaded trim in the seam allowances of the cozy before sewing pieces together. Stitch decorative fringe and/or trims to the edges. Create personal or 'fussy cut' appliques out of a favorite fabric and stitch to cozy. Make flowers using a 'yoyo maker', add sequins and beads to the centers, and use rickrack or decorative trims for the stems. Personalize with hand or machine embroidered letters, decorative stitches, or quilting stitches. Add buttons, beads, gem stones, etc.



Use your imagination, be creative and have fun!

Congratulations on completing your **KWIK•SEW** sewing project!

Please take a moment to share your comments with our design studio by visiting: [www.kwiksew.com/survey](http://www.kwiksew.com/survey)

Copyright © MMVIII **KWIK•SEW**® Pattern Co., Inc.

All rights reserved. Protected under international copyright law. Commercial or industrial use prohibited unless there is a written agreement with **KWIK•SEW**® Pattern Co., Inc.

**KWIK•SEW**® Pattern Co., Inc. is not responsible for misprints or other errors, and in no event shall be liable for any damages whatsoever resulting from the purchase or use of this product.